



## TOPS Rapid Response Shelters Model 6A



### Tactical Operational Shelters (TOPS Series)

TOPS Shelters, or otherwise known as Tactical Operational Shelters, are a patented system of shelters that are rapidly deployable, mobile and field operational. TOPS Shelters are designed to accommodate lighting, cooling and heating systems, providing a complete solution for field deployment in different environments.

The revolutionary hub system utilized by TOPS Shelter frames eliminate internal torque within the frames, significantly improving the ease of setting up / compacting down the shelter. The shelters also deploy more rigidly in place, enhancing their performance in the field.

TOPS Shelters are modular and are designed for interconnectivity. TOPS Shelters are exported worldwide and are used by military personnel globally.



### Golden Season Pte Ltd



6A model, A series

## Features & Benefits

- Compact Storage Systems - Our shelters are compact and easy to transport.
- Our shelters are interconnectable to form large deployment areas.
- Our shelters can be deployed quickly without assembly.
- Our shelters are capable of sustaining strong winds / gusts.
- Our shelters are fully operational in different temperatures.
- Our composite tubes have three times the flex strength of aluminium.
- 8 to 10 persons to deploy
- Can interconnect with other A series models

Specifications	
Dimensions	
Length – Interior:	33.6 Ft
Length – Exterior:	35.3 Ft
Width – Interior:	13.6 Ft
Width – Exterior:	15.3 Ft
Height – Interior:	8.1 Ft
Height – Exterior:	10.6 Ft

## Golden Season Pte Ltd

# GOLDEN SEASON PTE. LTD.

www.goldenseason.com.sg | www.gseason.com



Materials	
Composite tube:	OD 15.6mm x ID 12mm, thickness 1.8mm
Outer fabric:	1000D 20*20 400gsm (Blue/Green/Orange) PVC coated fabric, thickness: 0.33mm ~ 0.35mm
Inner fabric:	250D 49*44 280gsm white PVC tarpaulin, thickness: 0.21mm ~ 0.23mm
Product Information	
Usable Area:	413.4 Sq.Ft
Weight (Insulation liner):	20 ~ 21 Kg
Weight (Groundsheet):	21 ~ 22 Kg
Total Weight:	330 ~ 340 Kg (Include of groundsheet and accessories)
Shape:	Dome shaped

\*Specifications are subject to change without prior notice.

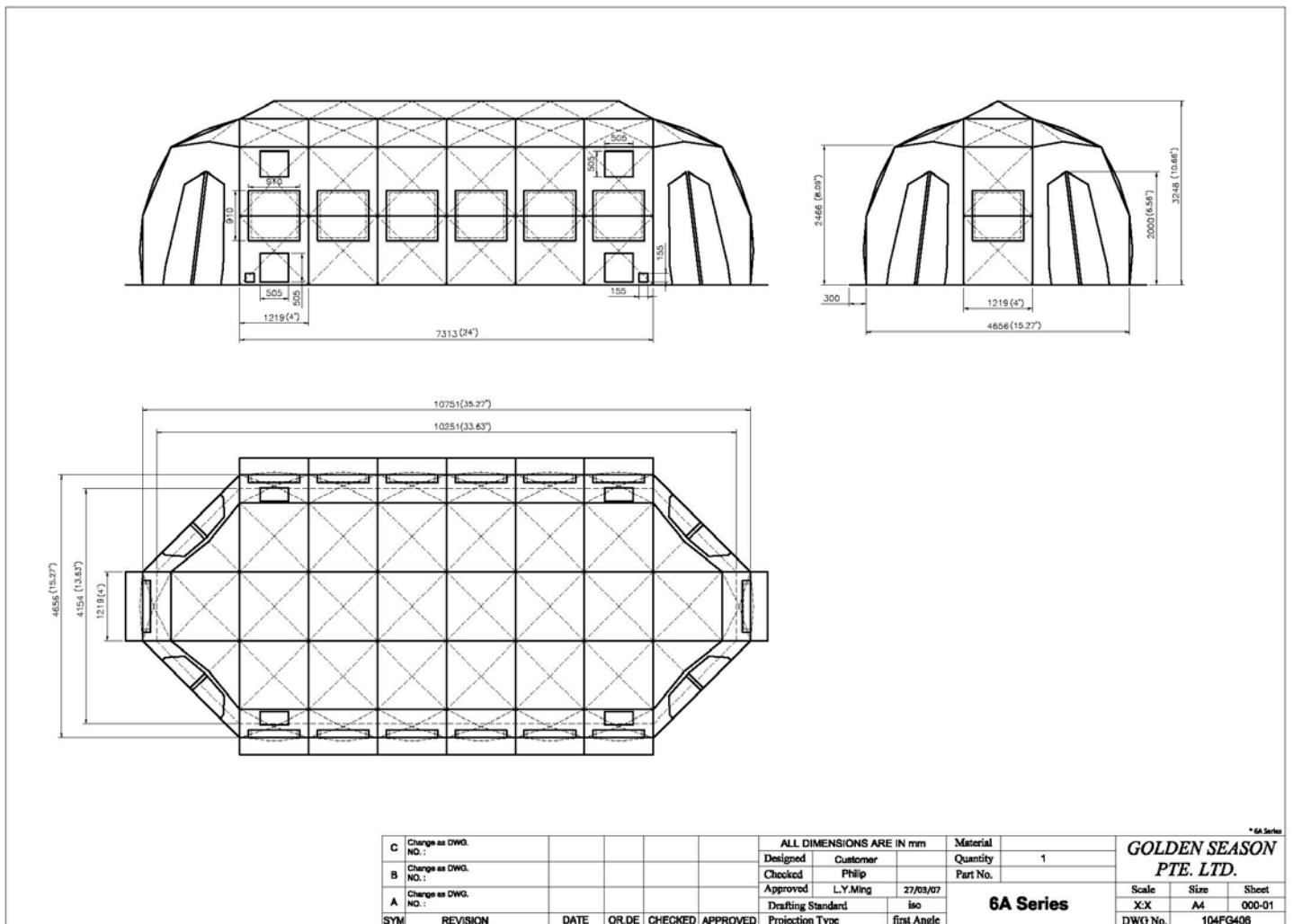
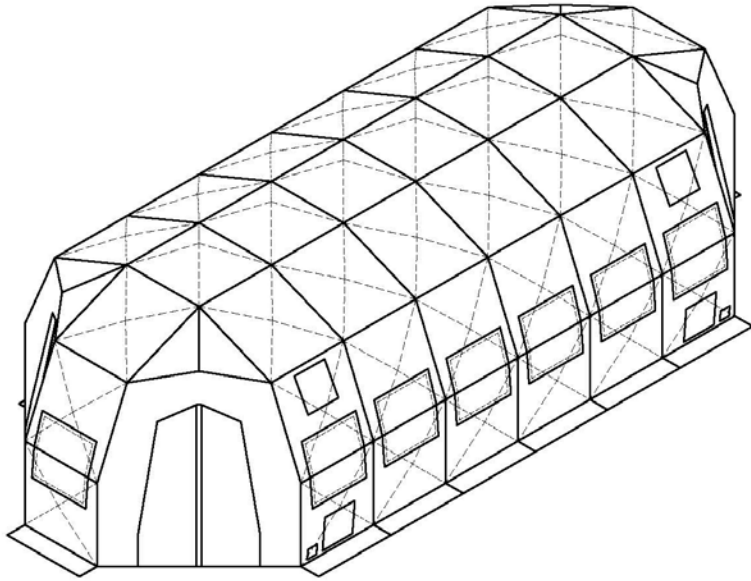


Figure A

## Golden Season Pte Ltd

31 Playfair Road Singapore 367993 (Golden Season building) T 65.6863 2228 F 65.6363 2478  
 Email: info@goldenseason.com.sg Website: www.goldenseason.com.sg | www.gseason.com Co. Regn No: 03734/1984E  
 GST Registration No. M2-0067495-2



### 6A Series

Physical Dimensions:		Feet
Length - Interior		33.6
	Exterior	35.3
Width - Interior		13.6
	Exterior	15.3
Height - Interior		8.1
	Exterior	10.6
Usable Area		413.4 Sq.Ft
Total weight		300 kg

C						ALL DIMENSIONS ARE IN mm			Material		Quantity			GOLDEN SEASON PTE. LTD.		
Change as DWG. NO.:						Designed	Customer				1					
B						Checked			Part No.							
Change as DWG. NO.:						Approved	L.Y.Ming		27/03/07							
A						Drafting Standard			iso		6A Series					
Change as DWG. NO.:						Projection Type		first Angle				Scale	Size	Sheet		
SYM						REVISION	DATE	OR.DE	CHECKED	APPROVED			X-X	A4	000-02	
												DWG No.	104FG406			

Figure B